

This article is protected by copyright, East Tennessee Historical Society. It is available online for study, scholarship, and research use only.

Suggested Citation:

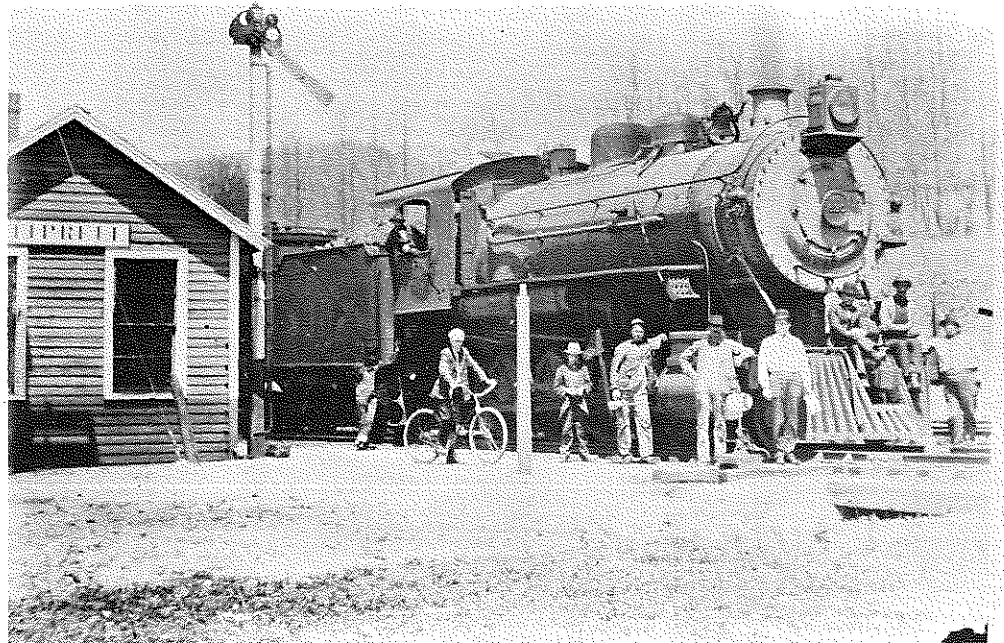
“Tennessee Gallery: Claiborne County in Old Photographs.” *Tennessee Ancestors* 4, no. 3 (December 1988): 239-243.

TENNESSEE GALLERY: CLAIBORNE COUNTY IN OLD PHOTOGRAPHS

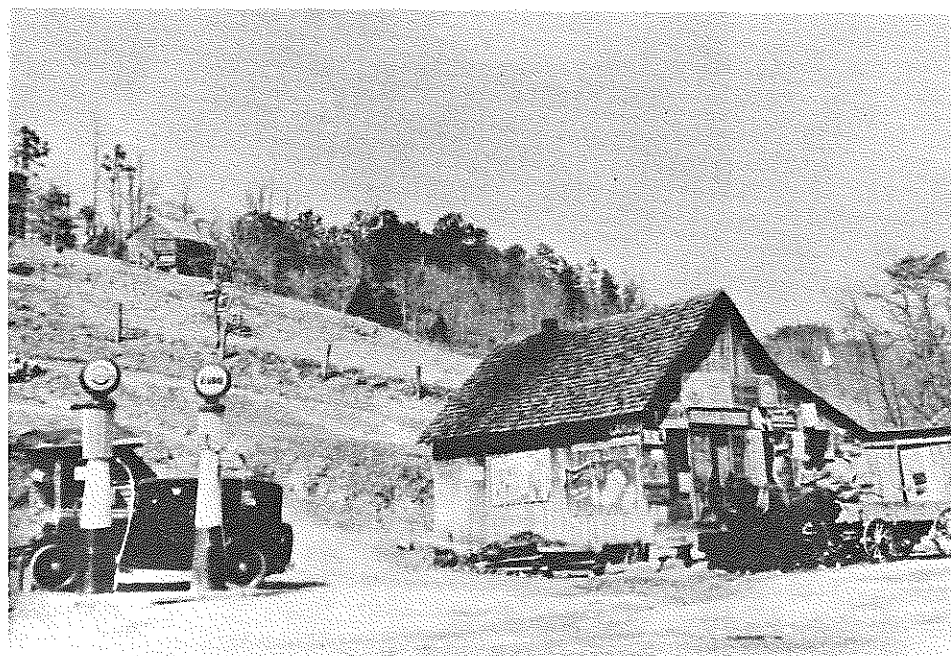
Provided by Beverly Wayne Noah
Claiborne County Historian

The following photographs were submitted by Wayne Noah (Route 2, Box 264, New Tazewell, TN 37825) who was appointed Claiborne County Historian in 1986. He has been collecting and publishing old photographs of Claiborne County in the Claiborne Progress with his newspaper column.

Tiprell rail-
road depot in
the early
1900s on the
railroad from
Middlesboro,
KY to Knox-
ville, TN.
Today it lies
just inside the
Cumberland Gap
Park.



Tom Cole Store
in May, 1933
just inside
Union County on
the Claiborne
and Union
County lines.
The store is
still in
operation.



TENNESSEE GALLERY: CLAIBORNE COUNTY IN OLD PHOTOGRAPHS

Cumberland Gap
in 1862, with
the mountain-
sides cleared
for battle.

(Photo courtesy
of Charles
Warren of
Middlesboro)



Leatherwood
Baptist Church



Ernest L. Stanifer around the year 1915 in front of the old Cherokee Hotel in New Tazewell. He sold Rawleigh Products throughout the country from his buggy.



Old-time baptizing at Blairs Creek Baptist Church in the early 1900s. Located three miles north of Tazewell on Highway 25E near Powell River Bridge. The church building in the photograph was built in 1909 and destroyed in the tornado on March 14, 1933.



TENNESSEE GALLERY: CLAIBORNE COUNTY IN OLD PHOTOGRAPHS

Coal mining in
the early 1900s

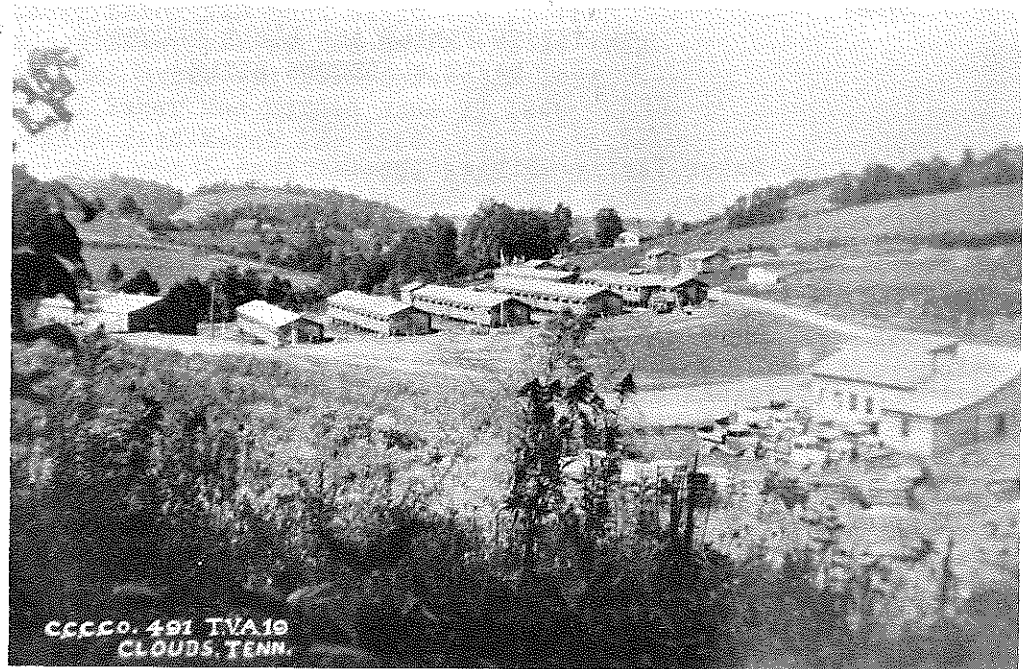


Coal mining in
the early 1900s



TENNESSEE GALLERY: CLAIBORNE COUNTY IN OLD PHOTOGRAPHS

CCC Camp 491.
TVA Camp #19.
One of approx-
imately ten
camps in
Claiborne
County around
1935.



Cedar Pencil
Factory in
Combs on the
Powell River
August 6, 1915
after the steam
boiler exploded.
Two people
were killed and
several injured
in the explo-
sion. Nothing
is left to mark
the once
thriving com-
munity now ex-
cept a cemetery
near the rail-
road and the
river.

[Photograph
courtesy of
Mrs. Elmer
(Eva) Cline]

